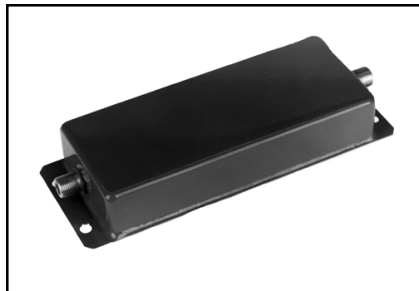
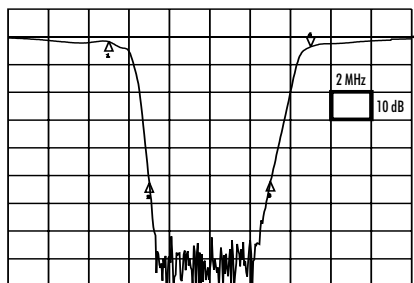


## "Brickwall" Single TV Channel Deletion Filters

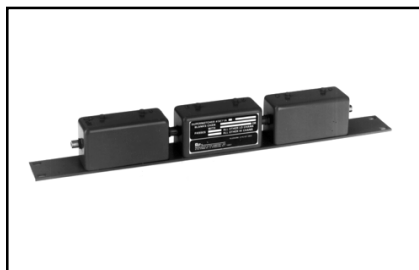
### 3271 For Sub and Low Bands



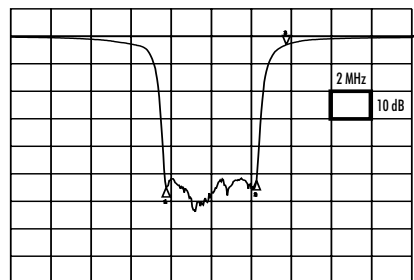
3271Sub-T7



Typical Frequency Response of  
3271Sub-T7



3271AA-2



Typical Frequency Response of  
3271AA-2

### 3271 Series

The 3271 series of deletion filters attenuate the entire channel spectrum from video carrier to aural carrier to allow reinsertion of new information without interference.

The 50 dB continuous suppression from video carrier to aural carrier has been found more than ample for reinsertion. Attenuation drops sharply at channel edges to preserve upper and lower adjacent channels. Models 3271Sub-T7 to T13 and 3271AA -2 to 6 are temperature stable at 20° to 120° F.

All models are at AC/DC passing. 1 amp Max.

Special assemblies of several channel deletion filters are available for:

- Suppressing contiguous channel blocks (see model 7964 on page 25.)
- Suppressing several non-contiguous channels (see model 6971 on page 25.)
- Spectrum splitting "Brickwall" highpass or lowpass filters (see model 6211 on page 24.)

Model Number Sub/Low Band	Freq. Range (MHz)	Adj. Carrier Insertion Loss
3271Sub-Channels T7 to T13	5.75-47.75	5 dB
3271AA-Channels 2 to 6	54-88	4 dB

Channels	Upper Passband* Limit (MHz)	Insertion Loss (Approx.)
T7 to T13	750	2.0 dB
2 to 6	500	1.0 dB

\*Can be extended to 1 GHz with external passband extender (Model 10500 see page 21.)

### Mechanical Specifications:

3271Sub-band Baseplate Dimensions: 6" x 2.25"

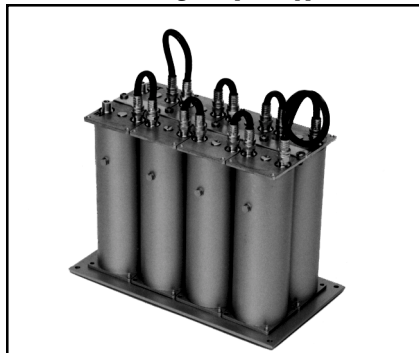
3271AA Baseplate Dimensions: 19" x 1.75"

Connectors: 75 ohms - Type "F"

**See Page 21 for Options and Ordering Information.**

## "Brickwall" Single TV Channel Deletion Filters

### 3271 For Mid./High/Super/Hyper



3271

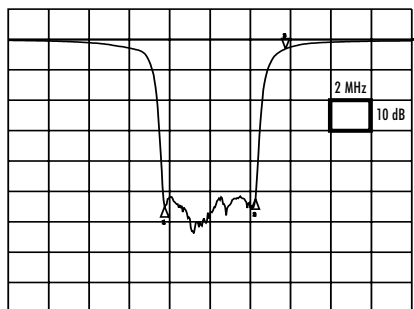
**Select Models pass up to 1 GHz without an external passband extender.**

#### 3271 Series

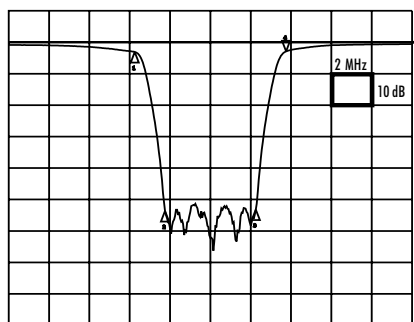
The 3271 series of deletion filters attenuate the entire channel spectrum from video carrier to aural carrier to allow reinsertion of new information without interference.

The 50 dB continuous suppression from video carrier to aural carrier has been found more than ample for reinsertion. Attenuation drops sharply at channel edges to preserve upper and lower adjacent channels.

All models are AC/DC passing. 1 amp Max.



Typical Frequency Response of 3271ABM-I



Typical Frequency Response of  
3271ABH-13

Special assemblies of several channel deletion filters are available for:

- Suppressing contiguous channel blocks (see model 7964 on page 25.)
- Suppressing several non-contiguous channels (see model 6971 on page 25.)
- Spectrum splitting "Brickwall" highpass or lowpass filters (see model 6211 on page 24.)
- Temperature for standard models: 50° F to 90° F.
- Temperature compensated models are available for -20° F to 120° F.

<u>Model Number</u>	<u>Freq. Range (MHz)</u>	<u>Adjacent Carrier Insertion Loss (Max.)</u>
3271ABM-Channels A-2 to I	108-174	3 dB
3271ABH-Channels 7 to 13	174-216	3 dB
3271ABS-Channels J to W	216-300	4 dB
3271ABY-Channels AA to YY	300-450	5 dB
3271ABY-Channels AAA to RRR	450-564	6 dB Approx.

<u>Channels</u>	<u>Upper Passband Limit (MHz.)</u>	<u>Insertion Loss (Approx.)</u>
A-2 to A	550*	1.5 dB
B to F	750*	1.5 dB
G to 9	850*	1.0 dB
10 to ZZ	1000	1.0 dB

\*Can be extended to 1 GHz with external passband extender (see model 10500 on page 21.)

#### Mechanical Specifications:

3271ABM, 3271ABH, 3271ABS & 3271ABY Baseplate Dimensions: 9" x 5" A 19" x 7" rack panel is available upon request.

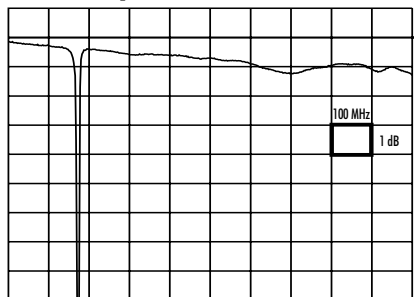
Temperature compensated models Baseplate Dimensions: 11" x 5"

Connectors: 75 ohms - Type "F"

**See Page 21 for Options and Ordering Information.**

## "Brickwall" Single TV Channel Deletion Filters

### Passband up to 1GHz



Typical Frequency Response of 3271ABH-13 showing an upper passband to 1 GHz.

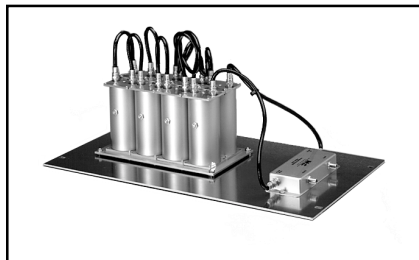
### Options:

- (S1 or S2) 12 volt activated switch. See p. 22 Switchable Option (Model 8197)
- (P) 15 Amp. AC/DC power bypass - see p. 22 Power Passing Option (Model 7100)
- Weatherized Housing:
  - Option A (F connectors and no strand mount)
  - Option B (F connectors with strand mount)
  - Option C (Stinger entries and no strand mount)
  - Option D (Stinger entries with strand mount)
- Retuning to non-standard channel formats and other channel bandwidths
- 10500 passband extender (see below).

### Ordering Information:

3271(X)-(Channel)  
 X - Designates SUB  
 AA  
 ABM  
 ABH  
 ABY

### 10500 Passband Extender



3271 with 10500 Passband Extender

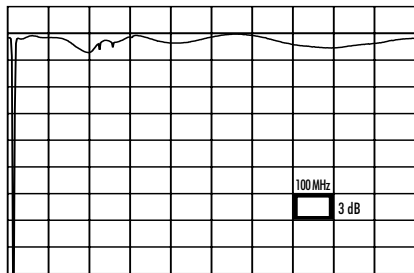
### Passband Extender

The Model 10500, 1 GHz module, is used to extend the passband of any channel deletion filter or filter network to 1 GHz. Typical insertion loss is less than 1 dB. The "extender" is custom tuned with your channel elimination network. The low loss response across the extended band permits increased channel capacity to 1 GHz.

### Specifications

(Passband extender only)

Passband loss: ..... 3 dB Max.  
 1 dB Typical



Typical Frequency Response of 3271 with 10500

### Mechanical Specifications

Connectors: 75 ohm - Type "F" - (female)  
 Panel mounted with deletion filter(s).  
 Weatherized housing available.