

Fiber & Cable Accessories, Inc.

Full Product Lines Spec Sheet

Approved for use by all MSO's and
Cable Manufacturers

United States Patent #'s:

5,867,624

6,311,006 B1

6,898,363 B2

7,085,468 B2

OPTI-LOOPTM
Fiber & Cable Accessories Inc.

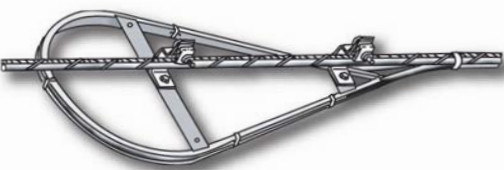
Product Specification & Planning Notice
Document # 021309-AA1
Issued 1st Quarter 2009

1.0 SUBJECT: Product specification and planning notice using the Opti-Loop® brand storage devices and hardware applications.

2.0 PRODUCT VARIETY COVERED:

- 2.A. Aluminum FOS Opti-Loop® units for strand/messenger cable
- 2.B. Plastic FOS Opti-Loop® units for strand/messenger cable
- 2.C. ADSS Opti-Loop® units for ADSS cable applications
- 2.D. ADSS Opti-Loop® "Direct Attach" for ADSS cable applications
- 2.E. Hardware for Opti-Loop® and miscellaneous cable uses
- 2.F. Horse-Shoes® for FTTP drop cable storage and protection

2.A. The aluminum Opti-Loops® are the industry standard, highest quality, and longest life storage units available for strand/messenger mounted cable, with well over one million units currently in service. Ten models ranging from 10" to 30" diameter will accommodate all fiber cable up to 1.5" as well as most ribbon construction fiber. Aluminum Opti-Loops® are approved and used by all CATV, MSO's, Telco, and Utility companies throughout the U.S. and several other countries. Opti-Loops® are available through all major Telco, CATV, and Utility distributors in the U.S. and Latin America. **Three *multi-wrap models are available; 12", 16" and 18" to eliminate the need for "stacking" when *multi-wrap installation is used. No need to buy several racks when one will suffice.**



2.A. DESIGN FEATURES AND BENEFITS:

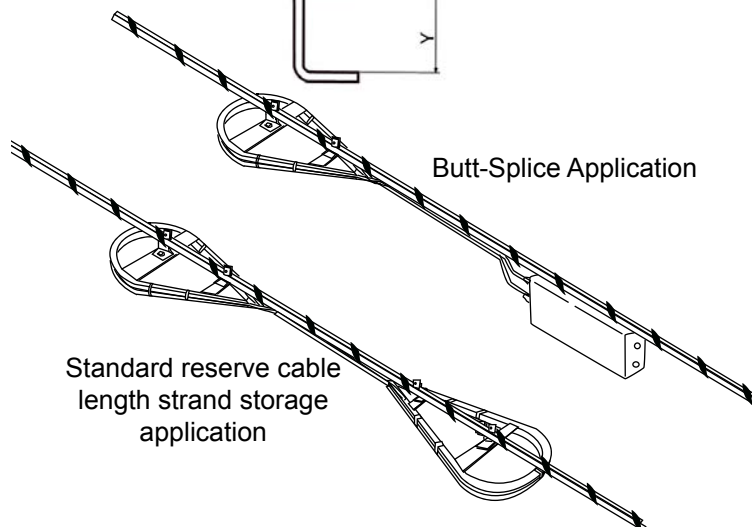
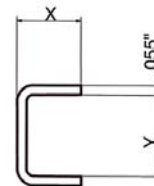
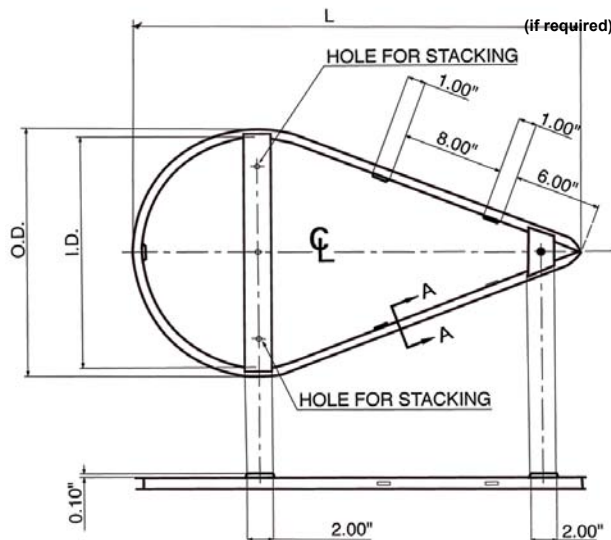
- *The Opti-Loop® features all aluminum construction with continuous welds at crossbars and ends.
- *Each pair is individually boxed with stainless steel mounting bolts, nuts and washers included.
- *Will fit all fiber cable up to 1.50" OD.
- *Dual coat baked on polyester powder coat finish.
- *Tie eyelets are designed to accommodate both stainless steel and tie wrap securing methods.
- *Radius ends to ensure no sharp corners.
- ***Minimal surface area minimizes stress and ice loading, a major concern in areas where icing can occur.**
- *Lifetime Warranty

2.A. PART NUMBERS FOR ORDERING:

FABRICATED FROM 6063-T52 EXTRUDED ALUMINUM

MODEL	L	O.D.	I.D.	X	Y	TYWRAP●
FOS-10	23.125"	11.36"	10.125"	0.617"	0.650"	N
FOS-1	26.125"	13.36"	12.125"	0.617"	0.650"	Y
* FOS-2	26.125"	13.36"	12.125"	0.617"	1.250"	Y
FOS-3	31.50"	17.69"	16.125"	0.780"	0.900"	Y
* FOS-3D	31.50"	17.69"	16.125"	0.755"	1.500"	Y
FOS-4	32.625"	19.69"	18.125"	0.780"	0.900"	Y
* FOS-5	32.625"	19.83"	18.125"	0.850"	1.750"	Y
FOS-20	33.750"	21.36"	20.125"	0.617"	1.250"	Y
FOS-24	37.750"	25.36"	24.125"	0.617"	1.250"	Y
FOS-30	44.250"	31.36"	30.125"	0.617"	1.250"	Y

TYWRAP● INDICATES TYWRAP EYELET IN CENTER OF LARGE RADIUS.



***Multi-Wrap Units**